



**India Meteorological Department
(Ministry of Earth Sciences)**

NATIONAL BULLETIN NO. 1 (BoB/04/2025)

TIME OF ISSUE: 0930 HOURS IST

DATED: 25.07.2025

FROM: INDIA METEOROLOGICAL DEPARTMENT (FAX NO. 24643965/24699216/24623220)

TO: CONTROL ROOM, NDM, MINISTRY OF HOME AFFAIRS (FAX.NO. 23093750)

CONTROL ROOM NDMA (FAX.NO. 26701729)

CABINET SECRETARIAT (FAX.NO.23012284, 23018638)

PS TO HON'BLE MINISTER FOR S & T AND EARTH SCIENCES (FAX NO.23316745)

SECRETARY, MOES (FAX NO. 24629777)

H.Q. (INTEGRATED DEFENCE STAFF AND CDS) (FAX NO. 23005137/23005147)

DIRECTOR GENERAL, DOORDARSHAN (23385843)

DIRECTOR GENERAL, AIR (23421105, 23421219)

PIB MOES (FAX NO. 23389042)

UNI (FAX NO. 23355841)

D.G. NATIONAL DISASTER RESPONSE FORCE (NDRF) (FAX NO. 26105912, 2436 3260)

DIRECTOR, PUNCTUALITY, INDIAN RAILWAYS (FAX NO. 23388503)

CHIEF SECRETARY, ODISHA (FAX NO. 0674-2536660)

CHIEF SECRETARY, WEST BENGAL (FAX NO. 033-22144328)

CHIEF SECRETARY, GOVT. OF BIHAR (FAX NO. 0612-2217085)

CHIEF SECRETARY, GOVT. OF JHARKHAND (FAX NO. 0651-2400255)

CHIEF SECRETARY, GOVT. OF CHHATTISGARH (FAX NO. 0771-2221206)

CHIEF SECRETARY, GOVT. OF MADHYA PRADESH (FAX NO. 0755-2551521)

CHIEF SECRETARY, GOVT. OF UTTAR PRADESH (FAX NO. 0522-2239283)

Subject: Depression over Northwest Bay of Bengal and adjoining areas of coastal West Bengal and Bangladesh.

The well-marked low pressure area over the north Bay of Bengal moved slowly west-northwestwards and concentrated into a Depression & lay centred at 0530 hrs IST of today, the 25th July over Northwest Bay of Bengal and adjoining areas of coastal West Bengal and Bangladesh near Lat. 21.4°N and Long. 89.5°E, about 130 km south of Mongla (Bangladesh), about 150 km east-southeast of Sagar Island (West Bengal), about 170 km southeast of Kolkata (West Bengal).

It is very likely to move west-northwestwards and cross West Bengal and adjoining Bangladesh coasts during forenoon of today, the 25 July 2025. Thereafter, it is likely to continue to move west-northwestwards across Gangetic West Bengal and adjoining North Odisha and Jharkhand during subsequent 24 hours.

Warnings:

(i) Rainfall Warning:

Gangetic West Bengal: Light to moderate rainfall at most places with **heavy to very heavy rainfall with extremely heavy rainfall (≥ 21 cm)** very likely at isolated places on 25th July; **heavy to very heavy rainfall** at isolated places during 26th-28th July.

Odisha: Light to moderate rainfall at most places with **heavy to very heavy rainfall with extremely heavy rainfall (≥ 21 cm)** very likely at isolated places on 25th July; **heavy to very heavy rainfall** at isolated places during 26th-28th July.

Jharkhand: Light to moderate rainfall at most places with **heavy to very heavy rainfall** very likely at isolated places during 25th – 28th July.

Chhattisgarh: Light to moderate rainfall at most places with **heavy to very heavy rainfall with extremely heavy rainfall (≥ 21 cm)** very likely at isolated places on 25th & 26th July; **heavy to very heavy rainfall** at isolated places on 27th & 28th July.

Madhya Pradesh: Light to moderate rainfall at most places with **heavy to very heavy rainfall** very likely at isolated places during 25th – 28th July **with extremely heavy rainfall (≥ 21 cm)** on 26th & 27th July.

Bihar: Light to moderate rainfall at most places with **heavy rainfall** very likely at isolated places during 25th – 27th July.

East Uttar Pradesh: Light to moderate rainfall at many places with **heavy rainfall** at isolated places on 25th & 26th July.

(ii) Wind Warning:

Squally wind speed reaching 40-50 kmph gusting to 60 kmph is prevailing over north Bay of Bengal, along & off Odisha, West Bengal and Bangladesh coasts and is likely to continue for next 24 hours. Squally wind speed reaching 30-40 kmph gusting to 50 kmph is likely over West Bengal, Jharkhand, and North Odisha during next 24 hours.

(iii) Sea Condition:

Sea condition is very likely to be rough to very rough over north Bay of Bengal and along & off Odisha, West Bengal and Bangladesh coasts during next 24 hours.

(iv) Fishermen Warning:

Fishermen are advised not to venture into north Bay of Bengal, along & off Odisha, West Bengal and Bangladesh coasts for next 24 hours.

(v) Impact Expected and Action Suggested due to heavy rainfall and squally winds (Odisha, Gangetic West Bengal, Chhattisgarh, Jharkhand, Bihar)

Impact expected:

- ❖ Breaking of tree branches, uprooting of small trees like banana, papaya, drum sticks. Strong wind and rain may damage plantation, horticulture and standing crops.
- ❖ Partial damage to vulnerable structures due to strong winds and rain.
- ❖ Minor damage to kutcha houses/walls, huts and roads due to heavy rain.
- ❖ Loose objects may fly.
- ❖ Onshore and offshore operations may get affected.
- ❖ Small ships, trawlers and boats may be affected.
- ❖ Road and rail traffic may be affected due to heavy rain and squally winds.
- ❖ There could be localised landslides, mudslides, landslips, water logging, inundation and flooding over low lying areas.
- ❖ Occasional reduction in visibility due to heavy rainfall.
- ❖ Helicopter services may get affected.

Action suggested:

- ❖ People are advised to keep a watch on the weather for worsening conditions and be ready to move to safer places accordingly.
- ❖ Take safe shelters; do not take shelter under trees, as there could be lightning.
- ❖ In case of expected lightning, unplug electrical/ electronic appliances, immediately, get out of water bodies and keep away from all the objects that conduct electricity.

- ❖ Tourism and recreational activities to be regulated.
- ❖ Onshore and offshore activities to be judiciously regulated.
- ❖ Helicopter services to be regulated.

Next bulletin will be issued at 1230 hours IST of today, the 25^h July, 2025.

(Shashi Kant)
Scientist D, IMD New Delhi

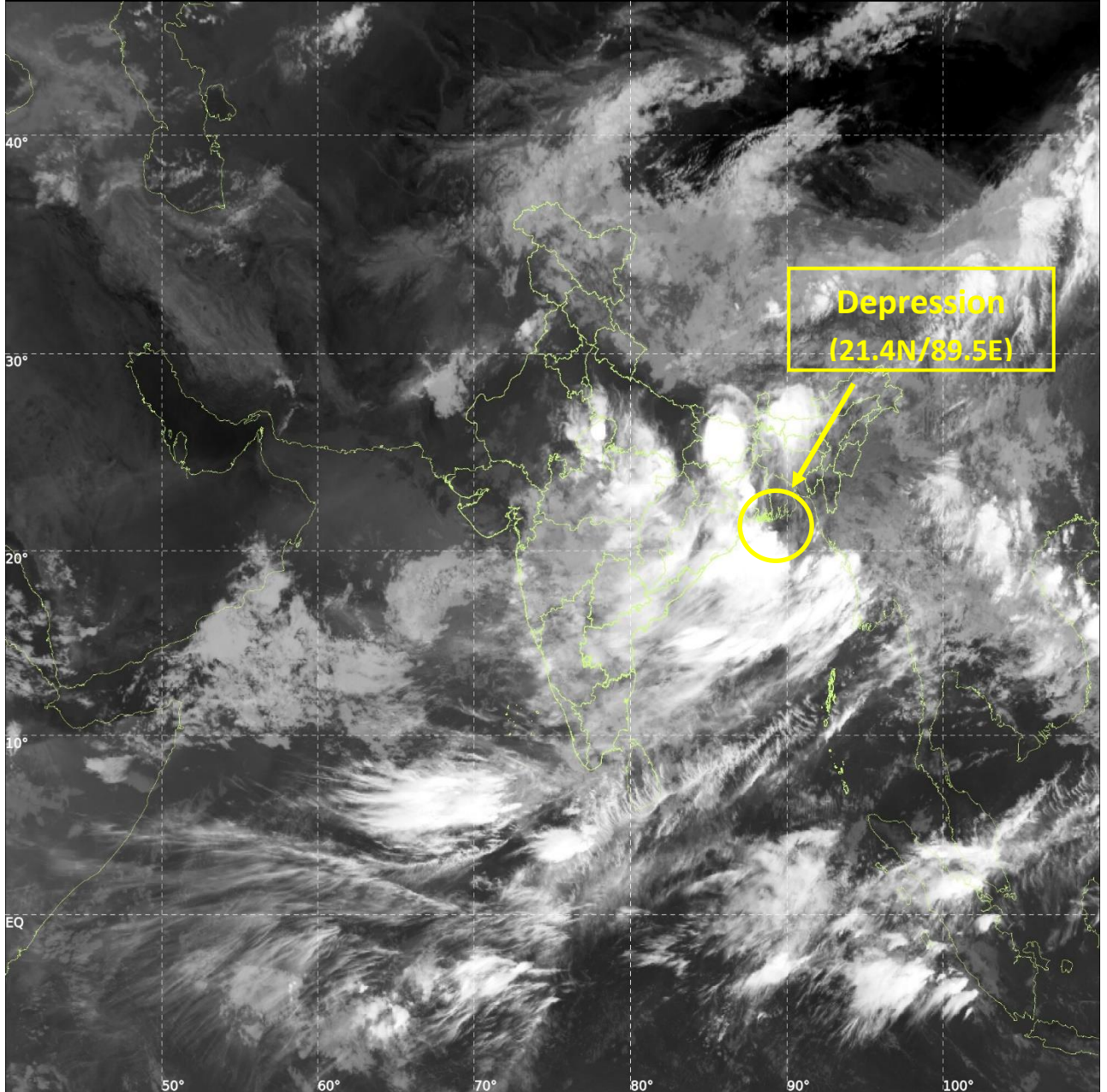
Copy to: ACWC Kolkata /CWC Bhubaneswar/CWC Vishakhapatnam/Meteorological Centres- Ranchi, Raipur, Patna, Bhopal, Lucknow, Jaipur, Mumbai, Nagpur



INSAT-3DS IMG, Thermal Infrared1 Count @ 10.83 μm
GMT:25-07-2025/(0200-0227) IST:25-07-2025/(0730-0757)
L1C MERCATOR (LINEAR STRETCH: 1%)

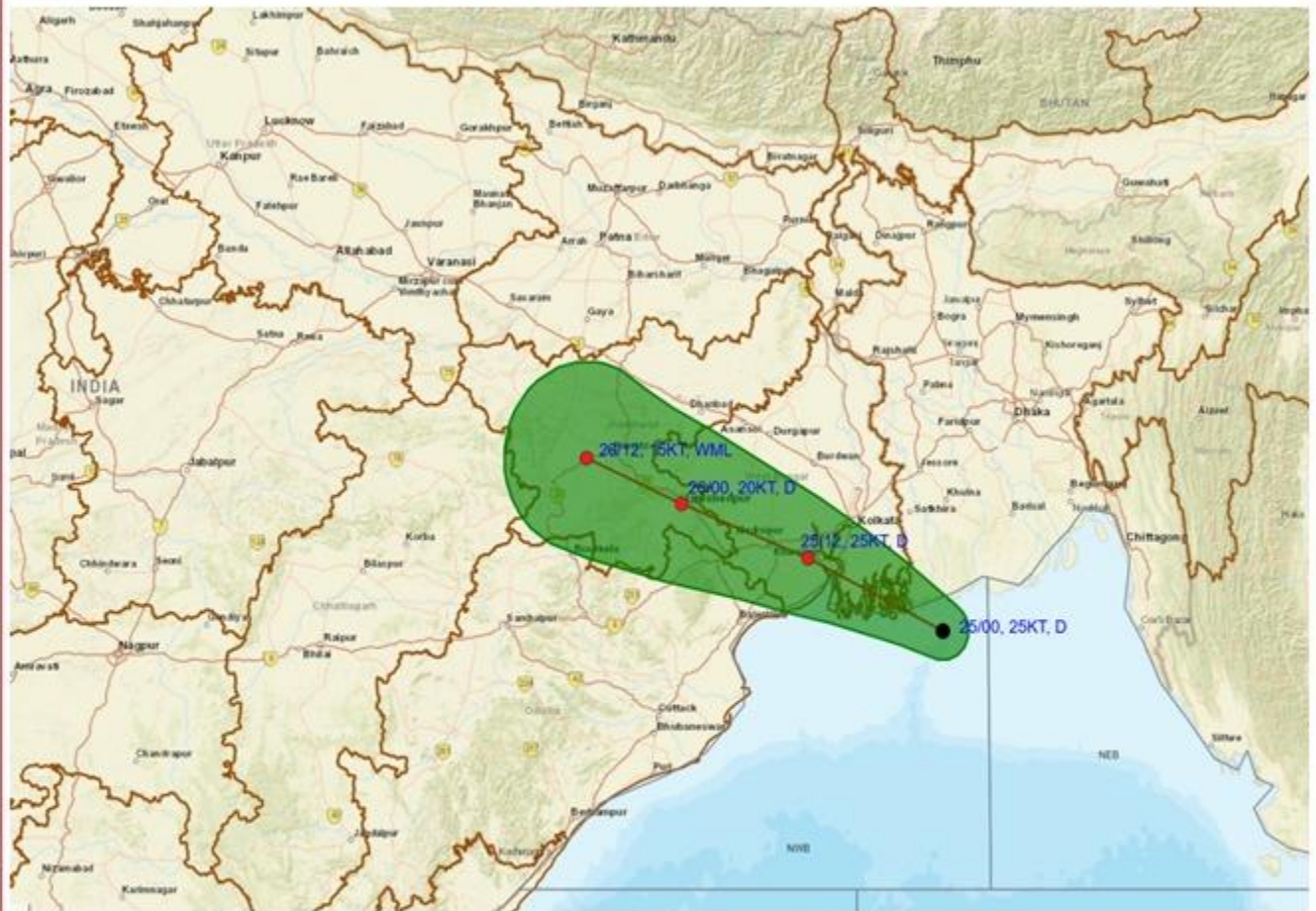
420

907





OBSERVED AND FORECAST TRACK OF DEPRESSION OVER NORTHWEST BAY OF BENGAL AND ADJOINING AREAS OF COASTAL WEST BENGAL AND BANGLADESH AT 0530 HRS. IST (0000 UTC) OF 25th JULY 2025

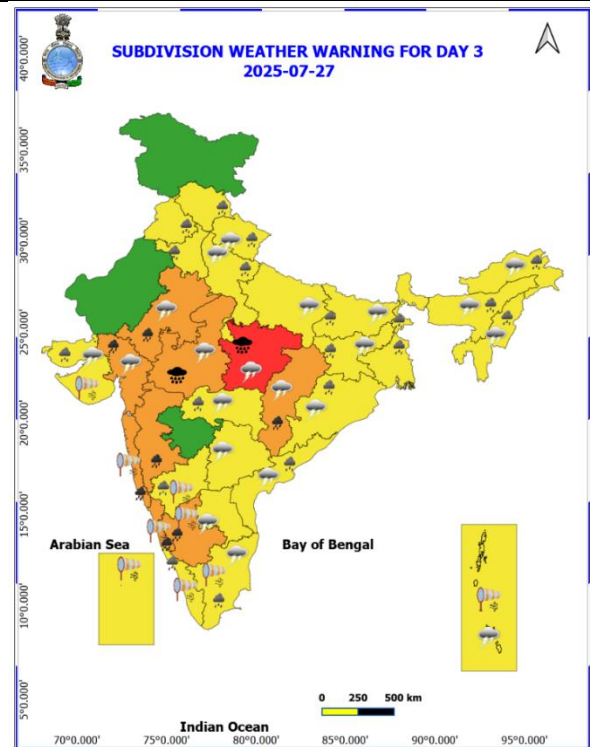
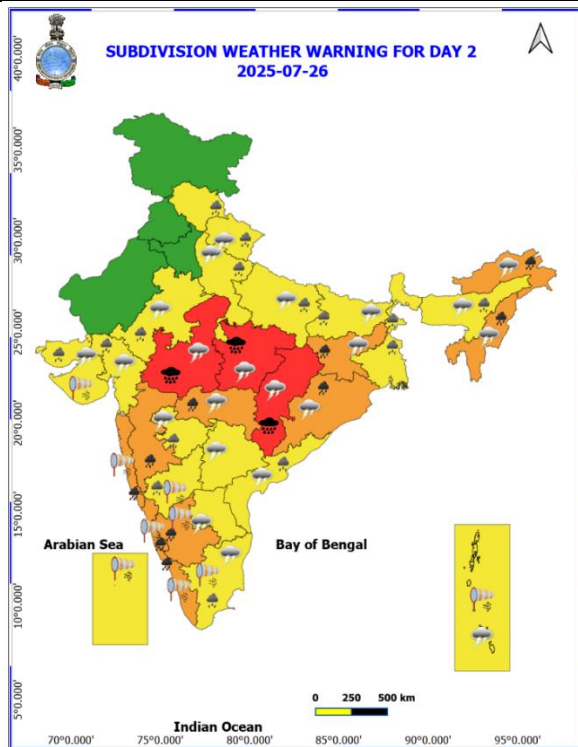
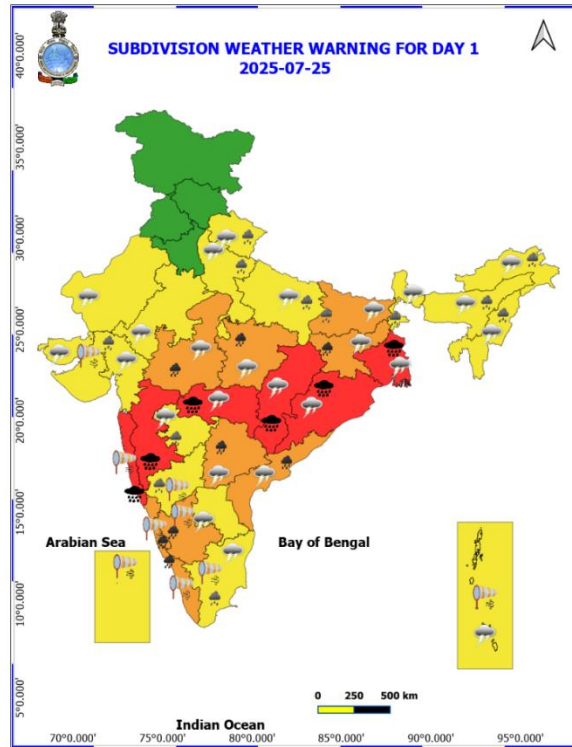


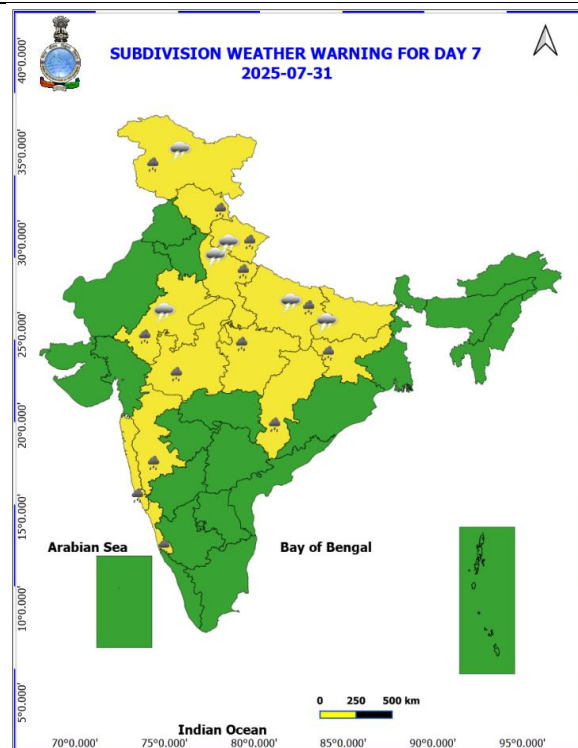
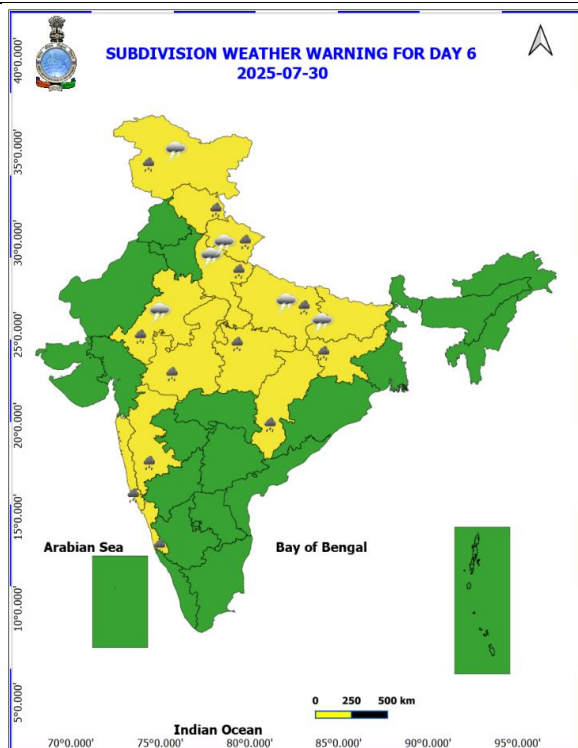
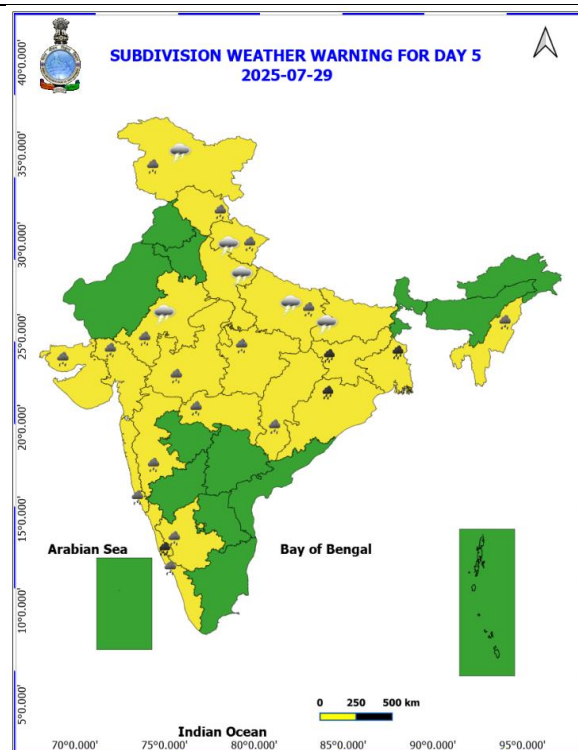
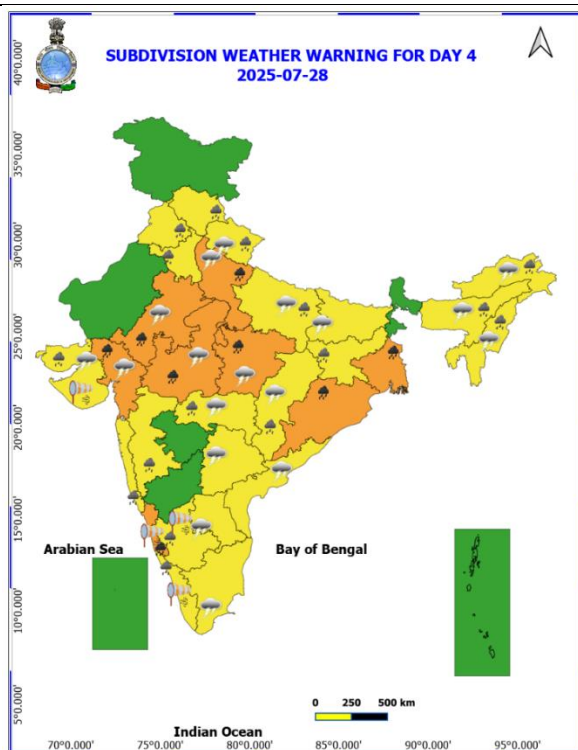
DATE/TIME IN UTC
IST=UTC + 0530
L: LOW PRESSURE AREA
WML: WELL MARKED LOW PRESSURE AREA
D: DEPRESSION (17-27 KT)
DD: DEEP DEPRESSION (28-33 KT)
CS: CYCLONIC STORM (34-47 KT)
SCS: SEVERE CYCLONIC STORM (48-63KT)
VSCS: VERY SEVERE CYCLONIC STORM (64-89 KT)
ESCS: EXTREMELY SEVERE CYCLONIC STORM (90-119 KT)
SuCS: SUPER CYCLONIC STORM (≥ 120 KT)

1KT=1.85 KMPH

- LESS THAN 34 KT
- ⌀ 34-47 KT
- ⌀ ≥ 48 KT
- OBSERVED TRACK
- FORECAST TRACK
- ▲ CONE OF UNCERTAINTY

Weather Warnings





- | | | | |
|--------------------------|-----------------|----------------------|--------------------|
| Heavy Rain | Very Heavy Rain | Extremely Heavy Rain | Heavy Snow |
| Thunderstorm & Lightning | Hailstrom | Dust Strom | Dust Raising Winds |
| Strong surface winds | Heat Wave | Hot Day | Warm Night |
| Cold Wave | Cold Day | Ground Frost | Fog |
| Hot & Humid | | | |

Flash Flood Guidance

24 hours Outlook for the Flash Flood Risk (FFR) till 0530 IST of 26-07-2025 :

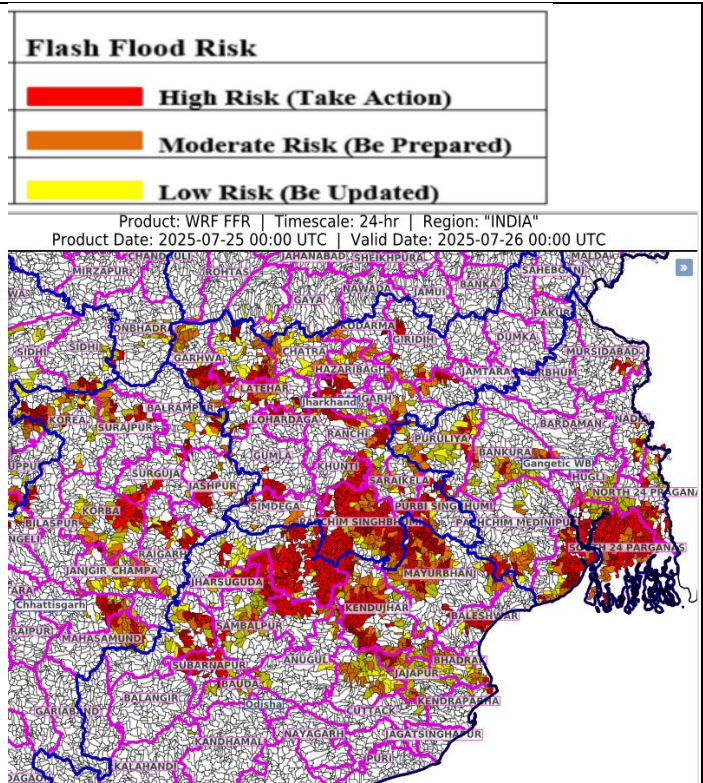
Low to Moderate flash flood risk likely over few watersheds & neighbourhoods of following Met Sub-divisions during next 24 hours.

Chhattisgarh – Balarampur, Baloda Bazar, Bilaspur, Janjgir_Champa, Jashpur, Korba, Korea, Mahasamund, Mungeli, Raigarh, Surajpur and Surguja districts.

Jharkhand – Garhwa, Palamu, Latehar, Lohardaga, Gumla, Simdega, Khunti, Ranchi, Ramgarh, Bokaro, Pashchim Singhbhum, Purbi Singhbhum, Saraikela, Chatra, Giridih, Dhanbad and Hazaribagh districts.

Odisha – Anugul, Baleshwar, Baragarh, Bauda, Bhadrak, Cuttack, Kendraparha, Deogarh, Dhenkenal, Jajapur, Jharsuguda, Kendujhar, Mayurbhanj, Sambalpur and Subarnapur districts.

Gangetic West Bengal - Eastmednipur, Haora, North 24 Pragana, Pashchim Medinipur, Puruliya, Bankura, Mursidabad, Nadia and South 24 Parganas districts.



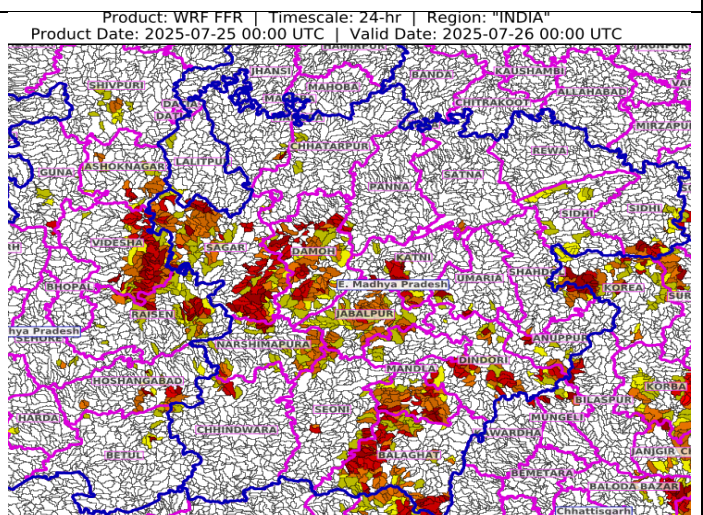
24 hours Outlook for the Flash Flood Risk (FFR) till 0530 IST of 26-07-2025:

Low to Moderate flash flood risk likely over few watersheds & neighbourhoods of following Met Sub-divisions during next 24 hours.

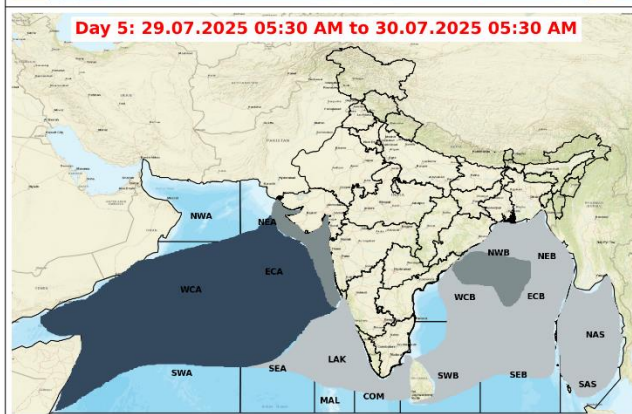
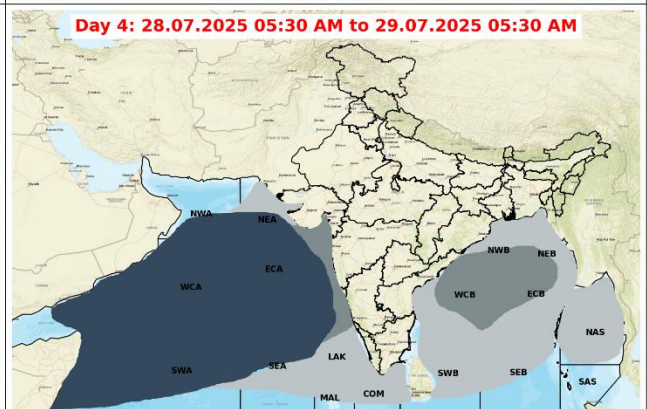
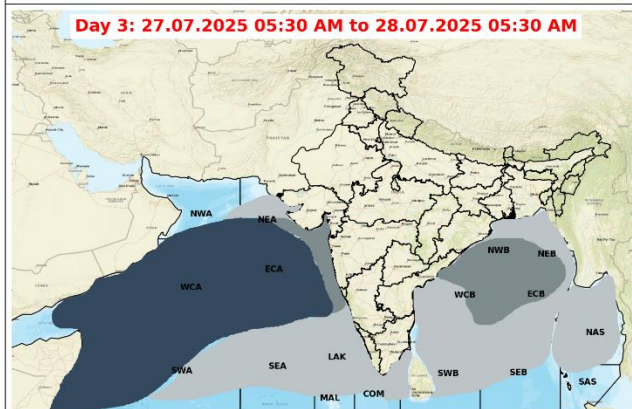
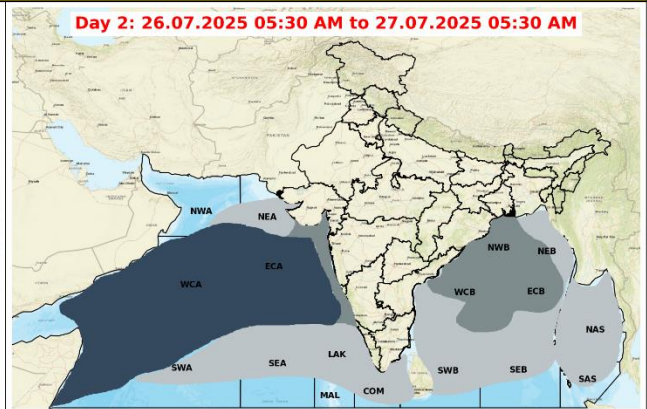
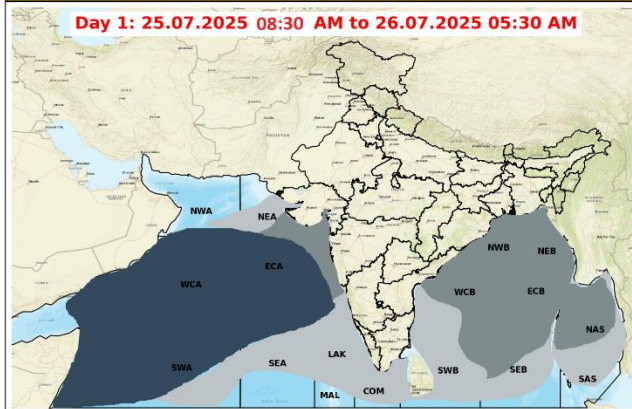
East Madhya Pradesh – Anuppur, Balaghat, Chhatarpur, Chhindwara, Damoh, Dindori, Jabalpur, Katni, Mandla, Narshimpura, Panna, Rewa, Sagar, Tikamgarh, Satna, Seoni, Shahdol, Sidhi and Umaria districts.

Adjoining West Madhya Pradesh - Ashoknagar, Guna, Raisen, Shivpuri, Narmadapuram, Betul and Videsha districts

Surface runoff/ Inundation may occur at some fully saturated soils & low-lying areas over Area of Concern (AoC) as shown in map due to expected rainfall occurrence in next 24 hours.



Fishermen Warning Graphics



Legend

	Squally wind with speed 55-65 kmph gusting to 75 kmph		CS with Gale winds with speed 60-80 kmph gusting to 90 kmph
	Squally Weather with wind speed 40-50 kmph gusting to 60 kmph		SCS with Gale wind speed 90-110 kmph gusting to 120 kmph
	Squally Weather with wind speed 45-55 kmph gusting to 65 kmph		VSCS with Gale wind speed 120-165 kmph gusting to 185 kmph
	Squally wind with speed 45-55 kmph gusting to 65 kmph		ESCS with Gale wind speed 165-220 kmph gusting to 245 kmph
	Squally wind with speed 50-60 kmph gusting to 70 kmph		

Fishermen are advised not to venture into the marked areas.